

Republika ng Pilipinas
PAMBANSANG PANGASIWAAN NG PATUBIG
(National Irrigation Administration)
Lungsod ng Quezon

MC No. 07 s. 2008

MEMORANDUM CIRCULAR

TO : THE DEPUTY ADMINISTRATOR, ASST.
ADMINISTRATORS, DEPARTMENT/ REGIONAL/
OPERATIONS/ PROJECT MANAGERS, PROVINCIAL
IRRIGATION OFFICERS, IRRIGATION
SUPERINTENDENTS, DIVISION MANAGERS AND ALL
OTHERS CONCERNED

SUBJECT : **RULES AND REGULATIONS IMPLEMENTING THE
ASEAN MUTUAL RECOGNITION ARRANGEMENT
ON ENGINEERING SERVICES – PROFESSIONAL
AGRICULTURAL ENGINEERING SERVICES**

Quoted hereunder in full for your information and guidance the Memorandum from the Office of the Secretary of the Department of Agriculture issued by the Undersecretary for Administrative and Finance dated October 10, 2007.

“Republic of the Philippines
DEPARTMENT OF AGRICULTURE
Office of the Secretary
Elliptical Road, Diliman, Quezon City

10 October 2007

MEMORANDUM

TO : ALL HEADS OF THE DA OSEC SERVICES, BUREAUS,
ATTACHED AGENCIES/CORPORATIONS, FOREIGN
ASSISTED PROJECT OFFICES AND REGIONAL FIELD
UNITS

FROM : THE UNDERSECRETARY FOR ADMINISTRATION AND
FINANCE

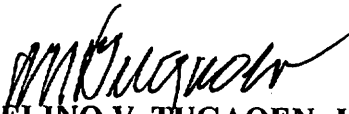
SUBJECT : RULES AND REGULATIONS IMPLEMENTING THE ASEAN
MUTUAL RECOGNITION ARRANGEMENT ON
ENGINEERING SERVICES – PROFESSIONAL
AGRICULTURAL ENGINEERING SERVICES

Attached is a letter of the Chairperson of the Professional Regulation Commission dated October 5, 2007 furnishing the DA a copy of the Resolution No. 03, series of 2007 of the Board of Agricultural Engineering (BOAE), the "*Rules and Regulations Implementing the ASEAN Mutual Recognition Arrangement on Engineering Services – Professional Agricultural Engineering Services*".

For your information and guidance.

(Sgd.) **BELINDA A. GONZALES**
Undersecretary"

For your information and guidance.


MARCELINO V. TUGAOEN, JR.
Administrator

January 23, 2008



Republic of the Philippines
Professional Regulation Commission
Manila

BOARD OF AGRICULTURAL ENGINEERING

Resolution No. 08
Series of 2007

WHEREAS, the Governments of Brunei Darussalam, the Kingdom of Cambodia, the Republic of Indonesia, Lao People's Democratic Republic, Malaysia, the Union of Myanmar, the Republic of the Philippines, the Republic of Singapore, the Kingdom of Thailand, and the Socialist Republic of Viet Nam, Member Countries of the Association of South East Asian Nations (hereinafter collectively referred to as "ASEAN" or "ASEAN Member Countries" or singularly as "ASEAN Member Country") have entered last December 9, 2005 an ASEAN Mutual Recognition Arrangement on Engineering Services, which covers professional agricultural engineering services;

WHEREAS, the practice of agricultural engineering is a well recognized and established profession in the Philippines by virtue of Republic Act No. 8559, otherwise known as the "Philippine Agricultural Engineering Act of 1998";

WHEREAS, item 4.1.6 of the ASEAN Mutual Recognition Arrangement on Engineering Services provides the responsibilities of the Professional Regulatory Authority of the ASEAN Member Countries, and one of which is to prepare rules and regulations to enable the implementation of the said Arrangement;

WHEREAS the Board of Agricultural Engineering and the Professional Regulation Commission referred to as Professional Regulatory Authority in Appendix I of the ASEAN Mutual Recognition Arrangement on Engineering Services are responsible in the regulation of the practice of agricultural engineering in the Philippines pursuant to R.A. No. 8559 (Philippine Agricultural Engineering Act of 1998) and R.A. No. 8981 (PRC Modernization Act of 2000);

NOW, THEREFORE, in view of the foregoing premises, the following rules and regulation are hereby promulgated to effectively implement the ASEAN Mutual Recognition Arrangement on Engineering Services, particularly on the professional agricultural engineering services:

ARTICLE 1
TITLE AND OBJECTIVES

Section 1. *Title.* This Resolution shall be known and cited as the "Rules and Regulations Implementing the ASEAN Mutual Recognition Arrangement on Engineering Services- Professional Agricultural Engineering Services".

Section 2. *Objectives.* This Rules and Regulations is formulated and adopted to prescribe the procedures in carrying out the implementation of the ASEAN Mutual Recognition Arrangement on Engineering Services particularly on Professional Agricultural Engineering Services and :

1.1 To facilitate mobility of agricultural engineering services professionals; and

1.2 To exchange information in order to promote adoption of best practices on standards and qualifications.

ARTICLE 2 DEFINITIONS

Section 3. *Definitions.* In this Rules and Regulations, unless the context otherwise requires:

a. **Accreditation** refers to quality assurance of graduate agricultural engineers by the Board of Agricultural Engineering or its equivalent national bodies in other ASEAN countries

b. **Assessment or Evaluation** refers to particular processes for reporting or comparison of achievement against criteria, standards, or a benchmark.

c. **Benchmark** refers to an agreed level by which others can be measured.

d. **Certification** refers to the issuance of a certificate or license to those who have met specified requirements for registration.

e. **Country of Origin** refers to the Philippines.

f. **Criteria or Standards** refers to a specification of qualities required to be met.

g. **Agricultural Engineering Services** refers to the activities constituting the practice of agricultural engineering under Republic Act No. 8559, known as the Philippine Agricultural Engineering Act of 1998, and covers the following :

1. Consultation, valuation, investigation and management services on agricultural engineering;

2. Management or supervision and the preparation of engineering designs, plans, specifications, project studies and estimates for agricultural, aquaculture and fishery, and forest product machinery, agricultural buildings and structures, farm electrification and energy systems, agricultural processing equipment, irrigation and soils conservation systems and facilities, agricultural waste utilization systems and facilities;

3. Conducting research and development, training and extension work, and consultancy services on agricultural engineering facilities/services, system and technologies;

4. Testing, evaluation and inspection of agricultural, fishery and forest product machinery and other related agricultural engineering facilities and equipment;

5. Management, manufacturing and/or marketing of agricultural machinery and other related agricultural engineering facilities and equipment;

6. Teaching, agricultural engineering subjects in institution of learning in the Philippines; and

7. Employment with the government provided such item or position requires the knowledge and expertise of an agricultural engineer.

h. **Graduate Agricultural Engineer** refers to a natural person and a Filipino Citizen and has satisfactorily completed a higher education in agricultural engineering program in an institution recognized by the Commission on Higher Education.

i. **Host Country** refers to the Philippines where the ASEAN Chartered Professional Agricultural Engineer (ACPAE) applies to work, not in independent practice, but in collaboration with the local Professional Agricultural Engineer, where appropriate, to practice Agricultural Engineering.

j. **Professional Agricultural Engineer** (also known as Practitioner) refers to a natural person, a Filipino Citizen and is assessed by the Board of Agricultural Engineering as being technically, morally, and legally qualified to undertake independent professional agricultural engineering practice and is registered and licensed for such practice by the Board of Agricultural Engineering.

k. **Professional Regulatory Authority (PRA)** refers to the Board of Agricultural Engineering and the Professional Regulation Commission or its equivalent bodies in other ASEAN countries.

l. **Recognition** refers to acceptance by an authority of demonstration of compliance with requirements.

m. **Registered Foreign Professional Engineer (RFPE)** refers to an ASEAN Chartered Professional Engineer (ACPE) who has successfully applied to and is authorized by the Board of Agricultural Engineering to work, not in independent practice, but in collaboration with one or more Agricultural Engineers of the Philippines.

n. **Registration** refers to the process of placing on a Register those who meet specified requirements within a jurisdiction.

o. Words in the singular include the plural

ARTICLE 3 RECOGNITION, QUALIFICATIONS, AND ELIGIBILITY

Section 4. *Qualifications to Become an ASEAN Chartered Professional Agricultural Engineer (ACPAE)*- A Professional Agricultural Engineer who possesses the following qualifications can qualify to become an ASEAN Chartered Professional Agricultural Engineer:

a. completed an accredited agricultural engineering degree in an institution recognised by the Commission on Higher Education;

b. possess a current and valid professional registration or licensing certificate to practice agricultural engineering in the Philippines issued either by the Board of Agricultural Engineering and the Professional Regulation Commission in accordance with existing policy on registration/licensing/certification of the practice of agricultural engineering or the Monitoring Committee pursuant to Article 4.2.2 and item 1.2 of Appendix II of the ASEAN Mutual Recognition Arrangement on Engineering Services;

c. acquired practical and diversified experience of not less than seven (7) years after graduation, at least two (2) years of which shall be in responsible charge of significant agricultural engineering work as stipulated in Appendix III, D - Example IV;

d. in compliance with Continuing Professional Development (CPD) policy of the Country of Origin at a satisfactory level; and

134

2. obtained certification from the Board of Agricultural Engineering and the Professional Regulation Commission with no record of serious violation on technical, professional or ethical standards, local and international, for the practice of agricultural engineering is eligible to apply to the ASEAN Chartered Professional Engineer Coordinating Committee (ACPECC) to be registered as an ASEAN Chartered Professional Agricultural Engineer (ACPAE) under the ASEAN Chartered Professional Agricultural Engineers Register (ACPAER).

Section 5. *ASEAN Chartered Professional Agricultural Engineer (ACPAE)*- A Professional Agricultural Engineer who possesses the above qualifications and complies with the Guidelines on Criteria and Procedures as per Appendix I and satisfies the Assessment Statement as per Appendix II, may, upon acceptance and payment of fees, be enplaced on the ASEAN Chartered Professional Agricultural Engineers Register (ACPAER) and accorded the title of ASEAN Chartered Professional Agricultural Engineer (ACPE).

Section 6. *Eligibility of an ASEAN Chartered Professional Agricultural Engineer (ACPAE) in Other ASEAN Countries to Practice in the Philippines.*

a. An ASEAN Chartered Professional Agricultural Engineer (ACPAE) in other ASEAN Countries shall be eligible to apply to the Board of Agricultural Engineering and the Professional Regulation Commission to be registered as a Registered Foreign Professional Agricultural Engineer (RFPAGE). The applicant shall submit with his application a sworn undertaking to:

(1) be bound by local and international codes of professional conduct in accordance with the policy on ethics and conduct established and enforced by the Philippines;

(2) be bound by prevailing laws and regulations of the Philippines; and

(3) work in collaboration with local Professional Agricultural Engineers in the Philippines subject to its domestic laws and regulations governing the practice of agricultural engineering thereto.

b. Upon approval, the successful ASEAN Chartered Professional Agricultural Engineer (ACPAE) applicant in other ASEAN countries shall, subject to Philippine laws and regulations and where applicable, not making submissions to statutory authorities of the Philippines, be permitted to work as a Registered Foreign Professional Agricultural Engineer (RFPAGE), not in independent practice, but in collaboration with designated Professional Agricultural Engineers in the Philippines, within such area of his own competency as may be recognised and approved by the Board of Agricultural Engineering.

ARTICLE 4 PROFESSIONAL REGULATORY AUTHORITY, MONITORING COMMITTEE AND ASEAN CHARTERED PROFESSIONAL ENGINEER COORDINATING COMMITTEE

Section 7. *Professional Regulatory Authority (PRA)*. The Board of Agricultural Engineering and the Professional Regulation Commission, referred to as the Professional Regulatory Authority shall be responsible for the following:

a. Consider applications from and authorize the ASEAN Chartered Professional Agricultural Engineers (ACPAs) to work as Registered Foreign Professional Agricultural Engineers (RFPAs), not in independent practice, but in collaboration with designated local Professional Agricultural Engineers in the

Philippines subject to the domestic laws and regulations and where applicable, not making submissions to statutory authorities of the Philippines as provided for by the ASEAN Mutual Recognition Arrangement on Engineering Services;

b. Monitor and assess the professional practice of the Registered Foreign Professional Agricultural Engineers (RFPAEs) and to ensure compliance with this Rules and Regulations;

c. Report to relevant local and international bodies developments in the implementation of the ASEAN Mutual Recognition Arrangement on Engineering Services;

d. Maintain high standards of professional and ethical practice in agricultural engineering;

e. Notify the ASEAN Chartered Professional Engineer Coordinating Committee (ACPECC) Secretariat promptly in writing when a Registered Foreign Professional Agricultural Engineer (RFPAE) has contravened the ASEAN Mutual Recognition Arrangement on Engineering Services, or when a Professional Agricultural Engineer who is also an ASEAN Chartered Professional Agricultural Engineer (ACPAE) is no longer qualified to undertake independent professional agricultural engineering practice in the Philippines, has not complied with Continuing Professional Development (CPD) policy of the Philippines at a satisfactory level, or has seriously violated technical, professional or ethical standards either in the Philippines whereby such violations have led to deregistration or suspension from practice;

g. Exchange information regarding laws, practices and prevailing developments in the practice of agricultural engineering within the region with the view to harmonization in accordance with regional and/or international standards.

Section 8. *Monitoring Committee*

a. Monitoring Committee (MC) shall be established to develop, process and maintain an ASEAN Chartered Professional Agricultural Engineers Register (ACPAER) in the Philippines;

b. The Monitoring Committee shall be composed of the Board of Agricultural Engineering as Chairman, and its members are the duly designated representative/s of the Philippine Society of Agricultural Engineers and the Commission on Higher Education;

c. The Monitoring Committee (MC) shall be recognized as competent by, and may exercise some functions on behalf of, the authorities responsible for the registration and licensing of professional agricultural engineers in the country.

d. The Monitoring Committee (MC) shall also be recognized as an authorized body and shall be able to certify the qualification and experience of individual professional engineers directly or by reference to other competent bodies.

e. The specific responsibilities of the Monitoring Committee (MC) for the development and maintenance of the ASEAN Chartered Professional Engineers Register (ACPER) are given in the ensuing Articles 4.2.5 and 4.2.6 below and in Appendices I, II and III;

f. The Monitoring Committee (MC), for the sake of seeking authorization to initiate a Register for the purpose of the ASEAN Chartered Professional

131

e. The ASEAN Chartered Professional Agricultural Engineer Sub-Coordinating Committee (ACPESC) shall report its progress of work to ASEAN Chartered Professional Agricultural Engineer Coordinating Committee and to the ASEAN Coordinating Committee on Services (CCS).

f. The administration of the ASEAN Chartered Professional Agricultural Engineer Sub- Coordinating Committee (ACPESC) shall be facilitated by a Secretariat.

g. General Meetings of the ASEAN Chartered Professional Agricultural Engineer Coordinating Committee (ACPESC) shall be held at least once in each two year period to deal with applications by Monitoring Committees seeking authorization to initiate Registers and/or authorization to review the Guidelines on Criteria and Procedures (Appendix I), Assessment Statement (Appendix II), Appendix III and other related guidelines, procedures and documentation, and recommend any amendments to all the Professional Regulatory Authorities (PRAs).

ARTICLE 5 MUTUAL EXEMPTION

Section 10. *Recognition of Arrangement*- The Philippines recognizes that any arrangement, which would confer exemption from further assessment by the Professional Regulatory Authority (PRA) that control the right to practice in each country, could be concluded only with the involvement and consent of the Professional Regulatory Authority (PRA) and the relevant government agencies;

Section 11. *Supplemental Assessment*- The Philippines note that licensing or registering authorities have statutory responsibility for protecting the health, safety, environment, and welfare of the community within their jurisdictions, and may require Professional Agricultural Engineers seeking the right to independent practice to submit themselves to some form of supplemental assessment;

Section 12. *Objectives of the Supplemental Assessment*. The Philippines consider that the objectives of such assessment should be to provide the relevant authorities with a sufficient degree of confidence that the Professional Agricultural Engineers concerned:

- a. understand the general principles behind applicable codes of practice and laws;
- b. have demonstrated a capacity to apply such principles safely and efficiently; and
- c. are familiar with other special requirements operating within the Philippines.

ARTICLE 7 DISPUTE SETTLEMENT

Section 13. The provisions of the ASEAN Protocol on Enhanced Dispute Settlement Mechanism, done at Vientiane, Lao PDR on the 29 November 2004, shall apply to disputes concerning the interpretation, implementation, and/or application of any of the provisions under the ASEAN Mutual Recognition Arrangement on Engineering Services and this Rules and Regulations..

Handwritten signature: M. P. S. A.

Handwritten signature: P. S. A.

Handwritten signature: J. S. A.

ARTICLE 8
FINAL PROVISIONS

Section 14. *Applicability*- The terms and definitions and other provisions of the GATS and AFAS shall be referred to and shall apply to matters arising under this Rules and Regulations for which no specific provision has been made herein.


Section 15. *Effectivity*- This Rules and Regulations shall take effect after (30) days following the completion of the publication in the Official Gazette or newspaper of general circulation in the Philippines.

Section 17. *Submission of Copy*- A copy of this Resolution shall be submitted to the ASEAN Secretary-General who shall promptly furnish a certified copy thereof to each ASEAN Member Country for their information


DONE in the City of Manila this AUG 31 of 2007.


GEORGE C. CANAPI
Chairman


ARIODEAR C. RICO
Member


DOMINGO F. TABBAL
Member

Attested by :


CARLOS G. ALMELOR
Secretary
Professional Regulatory Boards

APPROVED:


LEONOR TRIPÓN-ROSERO
Chairperson


RUTH RAÑA PADILLA
Commissioner


NILO L. ROSAS
Commissioner

APPENDIX I

ASEAN CHARTERED PROFESSIONAL AGRICULTURAL ENGINEERS GUIDELINES ON CRITERIA AND PROCEDURES

The eligibility of a Professional Agricultural Engineer for designation as an ASEAN Chartered Professional Agricultural Engineer (ACPAE) is determined by reference to five performance criteria, which are to be considered as a package. Some of these criteria are relatively objective in nature, while others shall require the Monitoring Committee (MC) to exercise a measure of professional judgment, particularly in relation to exceptional Professional Agricultural Engineers. These notes represent the benchmarks against which each criterion should be considered.

1.1 Completed an accredited or recognized agricultural engineering program, or assessed and recognized as possessing the equivalent

In order to be listed on an ASEAN Chartered Professional Agricultural Engineers Register (ACPAER), Professional Agricultural Engineers must demonstrate to the Monitoring Committee (MC) a level of academic achievement, the successful completion of an agricultural engineering degree in an institution recognized and accredited by the Commission on Higher Education;

1.2 Been assessed within their own jurisdiction as eligible for independent practice

The assessment may be undertaken by the Monitoring Committee (MC) or by the Board of Agricultural Engineering

1.3 Gained a minimum of seven years practical experience since graduation

The exact definition of practical experience shall be at the discretion of the Monitoring Committee (MC) concerned, but the work in question should be clearly relevant to the fields of agricultural engineering in which the Professional Agricultural Engineers claim expertise. During the initial period, the Professional Agricultural Engineers should have participated in a range of roles and activities appropriate to these fields of agricultural engineering. However, their roles while they are in responsible charge of significant agricultural engineering work may be more focused.

1.4 Spent at least two years in responsible charge of significant agricultural engineering work

As a general guideline, the work should have required the exercise of independent agricultural engineering judgment, the projects or programs concerned should have been substantial in duration, cost, or complexity, and the Professional Agricultural Engineer should have been personally accountable for their implementation. In general, a Professional Agricultural Engineer may be taken to have been in responsible charge of significant agricultural engineering work when they have:

1.4.1 planned, designed, coordinated and executed a small project; or

1.4.2 undertaken part of a larger project based on an understanding of the whole project; or

Q. N. N.

Q.

G. N. N.

J. N. N.

x.112

Agricultural Engineers Register (ACPAER) shall prepare a statement setting out the criteria and procedures for assessing compliance with the qualifications set out at Section 4 for Professional Agricultural Engineer applicants. The statement shall be reviewed by the ASEAN Chartered Professional Engineer Coordinating Committee (ACPECC). Guidelines on criteria and procedures and examples are set out in Appendices I, II and III.

g. The Monitoring Committee (MC) shall further undertake to:

1. Ensure that all practitioners registered as ASEAN Chartered Professional Agricultural Engineers (ACPAEs) by the ASEAN Chartered Professional Engineer Coordinating Committee (ACPECC) Secretariat comply fully with the requirements specified in this Rules and Regulations, and that a substantial majority of these practitioners have demonstrated their compliance through the primary procedures and criteria as shown in Appendices I, II and III;
2. Ensure that practitioners applying for registration as ASEAN Chartered Professional Agricultural Engineers (ACPAEs) are required to provide evidence that they have complied with the Continuing Professional Development (CPD) of the Philippines at a satisfactory level;
3. Ensure that practitioners registered by the ASEAN Chartered Professional Engineer Coordinating Committee (ACPECC) Secretariat as ASEAN Chartered Professional Agricultural Engineers (ACPAEs) apply from time to time for renewal of their registration, and in so doing, provide evidence that they have complied with the Continuing Professional Development policy of the Philippines at a satisfactory level;
4. Ensure the implementation and execution of the changes agreed under Article 6.3 as directed by the ASEAN Chartered Professional Engineer Coordinating Committee (ACPECC); and
5. Where Section 7(e) is applicable, withdraw and deregister the said ASEAN Chartered Professional Agricultural Engineer (ACPAE) from the ASEAN Chartered Professional Agricultural Engineers Register (ACPAER).

Section 9. The ASEAN Chartered Professional Engineer Coordinating Committee (ACPECC)

- a. The ASEAN Chartered Professional Engineer Coordinating Committee (ACPECC) established under the ASEAN Mutual Recognition Arrangement on Engineering Services shall have the authority to confer and withdraw the title of ASEAN Chartered Professional Agricultural Engineer (ACPAE). This authority may be delegated in writing from time to time by the ASEAN Chartered Professional Engineer Coordinating Committee (ACPECC) to the Monitoring Committee of the Philippines.
- b. To assist the ASEAN Chartered Professional Engineer Coordinating Committee on its functions particularly on professional agricultural engineering services, an ASEAN Chartered Professional Agricultural Engineer Sub-Coordinating Committee (ACPAESC) shall be organized. Members of the ASEAN Chartered Professional Agricultural Engineer Sub-Coordinating Committee (ACPAESC) shall comprise of one appointed representative from each Monitoring Committee (MC) of the participating ASEAN Member Countries;
- c. The functions of the ASEAN Chartered Professional Agricultural Engineer Sub-Coordinating Committee (ACPEESC) shall include:

LM

practice, normally after those graduate engineers have completed a period of supervised or monitored professional experience.

3.1 A mechanism for confirming that independent engineering Professional Agricultural Engineers have:

3.1.1 gained a minimum of seven years practical experience since graduation;

3.1.2 completed at least two years in responsible charge of Significant agricultural engineering work;

3.1.3 complied with the Continuing Professional Development (CPD) policy of the Board of Agricultural Engineering and the Professional Regulatory Authority at a satisfactory level; and

3.1.4 complied with, and are bound by, an appropriate code of conduct.

4.1 A mechanism for ensuring that registrants are audited at regular intervals to ensure that they have continued to comply with the conditions of registration. For each element, the Assessment Statement may include:

4.1.1 mechanisms applicable to Professional Agricultural Engineers;

4.1.2 national, regional and provincial mechanisms, and

4.1.3 existing or superseded mechanisms which are recognised by the Monitoring Committee (MC) in assessing candidates for registration as ASEAN Chartered Professional Agricultural Engineers (ACPAEs). The Monitoring Committee (MC) may attach restrictions to any or all mechanisms (for example, by requiring that assessment under a mechanism be accepted only in respect of graduate engineers who completed that process by a specified date, or who gained a specified minimum period of practical experience in the relevant discipline or disciplines). All such restrictions must be clearly identified. Assessment Statements are intended to be dynamic documents, with necessary amendments being effected by the responsible Monitoring Committee (MC) from time to time and notified to the ASEAN Chartered Professional Engineer Coordinating Committee (ACPECC), through the Secretariat

W/m

Q

G. Gray

[Signature]

LAA

1.4.3 undertaken novel, complex and/or multi-disciplinary work. The specified period of two years may have been completed in the course of the seven years practical experience since graduation, see Appendix III B - Example II, C - Example III and D - Example IV.

1.5 Complied with the Continuing Professional Development (CPD) policy at a satisfactory level

The nature and extent of the required compliance with Continuing Professional Development (CPD), and the manner in which such compliance is audited, shall remain at the discretion of the Monitoring Committee (MC) concerned, but should reflect the prevailing norms for such compliance by Professional Agricultural Engineers within the country.

1.6 Registered ASEAN Chartered Professional Agricultural Engineers (ACPE) must agree to the following:

1.6.1 Codes of professional conduct. All Professional Agricultural Engineers seeking registration as ASEAN Chartered Professional Engineers (ACPEs) must also agree to be bound by Philippine and international codes of professional conduct and with the policy on established professional ethics and conducts for agricultural established and enforced by the Board of Agricultural Engineering and the Professional Regulation Commission. Such codes normally include requirements that Professional Agricultural Engineers place the health, safety, environment, and welfare of the community above their responsibilities to clients and colleagues, practice only within their area of competence, and advise their clients when additional professional assistance becomes necessary in order to implement a program or project. Monitoring Committees (MCs) are required to certify that at registration the candidate has signed a statement of compliance with such applicable professional codes.

1.6.2 Accountability. ASEAN Chartered Professional Agricultural Engineers (ACPAEs) must also agree to be held individually accountable for their actions taken in their professional work, both through requirements imposed by the licensing and/or registering body in the jurisdictions in which they work and through the legal processes of such jurisdictions.

Appendix II
ASEAN CHARTERED PROFESSIONAL AGRICULTURAL ENGINEER
ASSESSMENT STATEMENT

The preparation of an Assessment Statement for assessing Professional Agricultural Engineers seeking registration as an ASEAN Chartered Professional Agricultural Engineer (ACPAE) shall involve identification and assessment of the following elements by the Monitoring Committee (MC).

1.1 One or more mechanisms for accrediting or recognising:

1.1.1 structured educational programs which qualify graduates agricultural engineers to enter professional agricultural engineering practice; and/or

1.1.2 assessment instruments which provide an alternative or supplementary mechanism for graduate agricultural engineers to demonstrate that they have reached an appropriate educational standard.

2.1 One or more mechanisms for assessing qualified graduate agricultural engineers as being eligible for independent professional agricultural engineering

Upon

Dr

Gray

g
24

1. Facilitating the development and maintenance of authoritative and reliable Registers of ASEAN Chartered Professional Agricultural Engineers (ACPAER);

2. Promoting the acceptance of ASEAN Chartered Professional Agricultural Engineers (ACPAs) in each participating ASEAN Member Country as possessing general technical and professional competence that is substantially equivalent to that of professional agricultural engineers registered or licensed in the Country of Origin;

3. Developing, monitoring, maintaining and promoting mutually acceptable standards and criteria for facilitating practice by ASEAN Chartered Professional Agricultural Engineers (ACPAs) throughout the participating ASEAN Member Country;

4. Seeking to gain a greater understanding of existing barriers to such practice and to develop and promote strategies to help governments and licensing authorities reduce those barriers and manage their processes in an effective and non-discriminatory manner;

5. Through the mechanisms available within ASEAN, encouraging the relevant governments and licensing authorities to adopt and implement streamlined procedures for granting rights to practice to ASEAN Chartered Professional Agricultural Engineers (ACPAs);

6. Identifying and encouraging the implementation of best practice for the preparation and assessment of agricultural engineers intending to practise at the professional level; and

7. Continuing mutual monitoring and information exchange by whatever means that are considered most appropriate, including but not limited to:

7.1. regular communication and sharing of information concerning assessment procedures, criteria, systems, manuals, publications and lists of recognised practitioners;

7.2. informing all Professional Regulatory Authorities (PRAs) when it has been notified that an ASEAN Chartered Professional Agricultural Engineer (ACPE) is no longer qualified to undertake independent professional engineering practice in the Country of Origin, has not complied with the Continuing Professional Development (CPD) policy of the Country of Origin at a satisfactory level, or has seriously violated technical, professional or ethical standards either in the Country of Origin or the Host Country, whereby such violations have led to deregistration or suspension from practice or withdrawal from the ASEAN Chartered Professional Agricultural Engineers Register (ACPAER);

7.3. verifying the operation of the procedures of participating ASEAN Member Countries; and

7.4. observing the open meetings of any Professional Regulatory Authorities (PRAs) and/or commissions responsible for implementing key aspects of these procedures and relevant open meetings of the governing bodies of the participating ASEAN Member Countries.

d. The ASEAN Chartered Professional Agricultural Engineer Coordinating Committee (ACPAsC) may, whenever it deems appropriate invite the non-participating ASEAN Member Countries to attend as observers its meetings.

Non
Q
Greeny
Q
LH

Appendix III

A. EXAMPLE I

MONITORING COMMITTEE SUMMARY OF ASSESSMENT OF
APPLICATION FOR ASEAN CHARTERED PROFESSIONAL
ENGINEER REGISTRATION

Name of Applicant:

Qualification, and place and date obtained:

Registered Agricultural Engineer Registration No. (Home Country):

Registered Agricultural Engineer Registration Date (Home Country):

Certified Compliance with ASEAN Chartered Professional Agricultural Engineer
Criteria:

Completed an accredited or recognized agricultural engineering program, or assessed recognized equivalent	
Been assessed in the Philippines as eligible for independent practice	
Gained a minimum of seven years practical experience since Graduation	
Spent at least two years in responsible charge of significant agricultural engineering work	
Complied with the Continuing Professional Development policy of the Philippines at a satisfactory level	
Confirmed signature on statement of compliance with codes of Ethics	

Signed

Officer Delegated

ASEAN Chartered Professional Engineer Monitoring Committee

B. EXAMPLE II

SIGNIFICANT AGRICULTURAL ENGINEERING WORK APPLICATION FOR
ASEAN CHARTERED PROFESSIONAL ENGINEER REGISTRATION

Receipt No.:

Qualification:

Registered Agricultural Engineer Registration No.:

Registered Agricultural Engineer Registration Date:

Name of Applicant:

Date of Birth:

Address:

Place of Employment:

LM

Company Name:

Address:

I wish to be placed on the ASEAN Chartered Professional Agricultural Engineers Register and apply as described below in accordance with the provision that defines two years experience in responsible charge of significant agricultural engineering works.

1. Agricultural Engineering Work Experience (describe in a retrospective order, beginning with the most recent one.)

Work No.	Starting Date/ Ending Date (Months)	Name of Organizations/ Positions/Title	Name of Work	Attestant's Column		
				Signature	Relationship of Signor to Applicant	Tel/Fax

Note: The signor above shall be, in principle, the representative of the organisation under which the applicant executed his engineering work.

2. Detailed Description of Agricultural Engineering Work (Describe, in detail, each work listed in the preceding page.)

Work No.	Position in Agricultural Engineering Work	Contents of Work (Describe the contents and significance of the work, the applicant's role, and the degree the applicant's responsibility. Using about 50 words.)

Note: Make a copy of this sheet when an extra sheet is needed.

I hereby swear that the above descriptions are true.

Date:

To ASEAN Chartered Professional Agricultural Engineer Monitoring Committee

Applicant's name:

Signature:

Handwritten signatures and initials on the right margin, including a large signature that appears to read "G. Gray" and other initials.

C. EXAMPLE III

CAREER OF REGISTERED AGRICULTURAL ENGINEER TO BE RECOMMENDED AS ASEAN CHARTERED PROFESSIONAL AGRICULTURAL ENGINEER AND SIMULATION FOR THE SAMPLING OF SIGNIFICANT AGRICULTURAL ENGINEERING WORK

Examples of registered Engineer		Mr. A Agricultural Engineering Consultant	
Age/Date of Birth		31 / September 22, 1967	
Technical Discipline optional Subject		Agricultural Engineering Agricultural Buildings and Structures	
Final Academic Background		Graduated from Department of Engineering, Engineering Faculty,	
Age	Project Owner Classification	Job Title	Project Name, Number of Months of Experience in Significant Engineering work, and Summary
25	DA Regional Filed Unit	Engineer I	Farm-to-Market Roads improvement planning
26	Department of Agriculture	Engineer I	Study of methods for planning and adjusting agricultural buildings and structures
27	Department of Agriculture	Engineer II	Establishment of farm structures improvement plan (6 months) Establishment of integrated basic plan for built-up farm area redevelopment (6 months) (Serving as the coordinator between the municipalities and localities, Mr. A worked out an integrated basic plan for built-up farm area redevelopment)
28	Department of Agriculture	Engineer III	Preparation of guideline for agricultural buildings development (draft)(3 months) Study of Policy for Environmental improvement in Farm Areas (2 months)
29	Department of Agriculture	Engineer IV	Preparation of an environmental improvement plan (4 months) (Mr. A worked out a plan to improve agricultural structures resources in a regional area.)

Ms. A
Q
Genay
Ch

Ch

30	Department of Agriculture	Engineer V	Preparation of plan for development of cases surrounding a new interchange (4 months) (Serving as the coordinator between the authorities concerned and the localities and working in tie-up with both parties. Mr. A worked out a plan.) 25 months
Sum of Experiences in responsible Charge of Significant Agricultural Engineering Work (Shaded)			

D. Example IV

DETAILED DESCRIPTION OF TWO YEARS EXPERIENCES IN RESPONSIBLE CHARGE OF SIGNICANT AGRICULTURAL ENGINEERING WORK

Concerning "Experiences in the execution of agricultural engineering work under complicated conditions, or agricultural engineering work requiring new concepts, or agricultural engineering work involving a plurality of different disciplines", the contents of more realistically presumed experiences are described below.

1. Experiences as chief or higher-position agricultural engineer (not in Assisting agricultural engineer position) in charge of engineering work executed under complicated conditions.

Complicated conditions

- The site is topologically complicated.
- Other structures are located close to the planned structures.
- There are strict safety and environmental requirements.
- The construction schedule is tight.
- There are many authorities concerned among which coordination is required.
- Public relations are difficult.

2. Experiences as chief or higher-position agricultural engineer (agricultural engineer not in assisting position) in charge of agricultural engineering work requiring new concepts.

- New concept
- New technologies
- New working methods
- New solutions
- New techniques

3. Experiences as chief or higher-position agricultural engineer agricultural engineer not in assisting position) in charge of agricultural engineering work involving a plurality of different disciplines. Engineering work requiring expertise covering various disciplines;

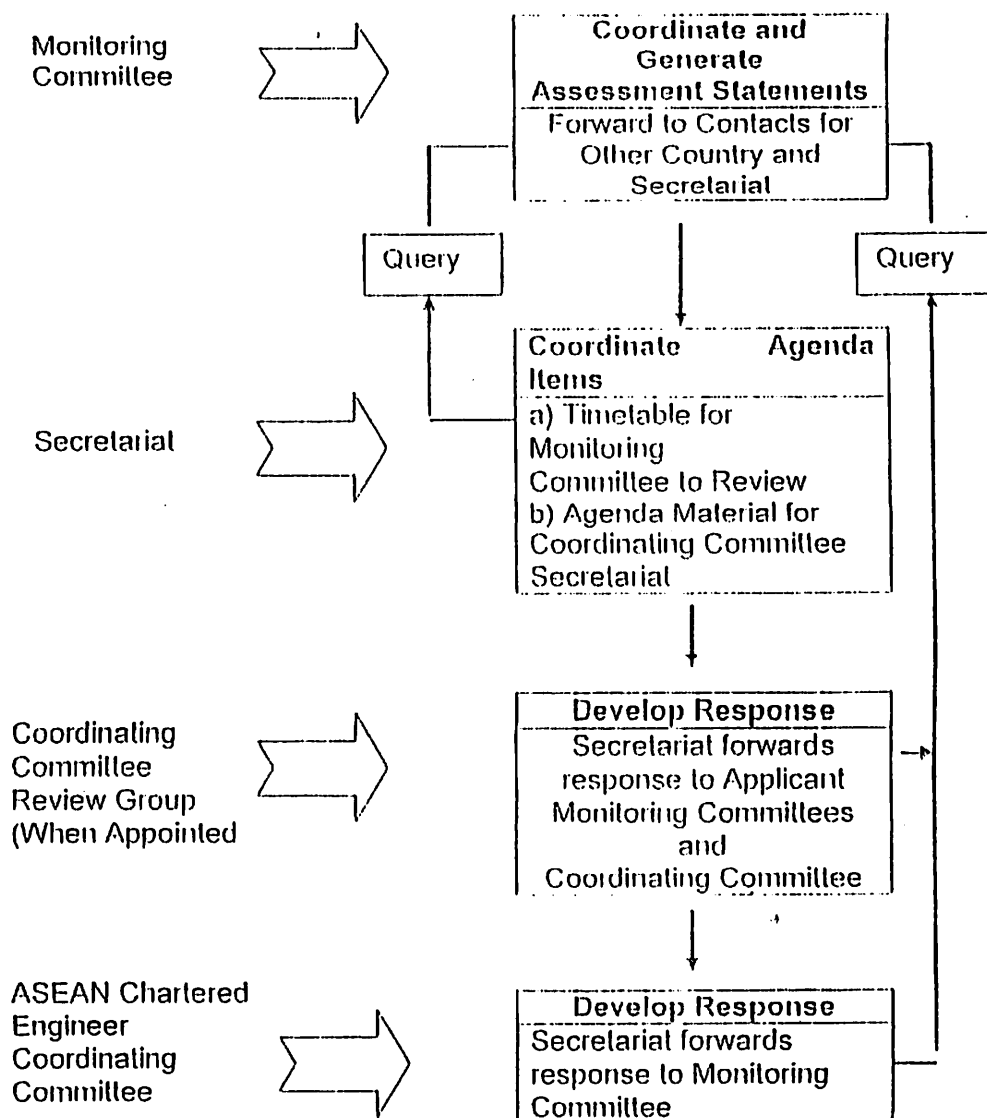
Handwritten notes:
 Apr
 Q
 G. Linay
 V

Handwritten mark: JAT

3. Experiences as chief or higher-position agricultural engineer agricultural engineer not in assisting position) in charge of agricultural engineering work involving a plurality of different disciplines. Engineering work requiring expertise covering various disciplines;

E. EXAMPLE V

ASSESSMENT STATEMENT FLOW CHART



Handwritten signatures and initials:
 [Signature]
 [Signature]
 [Signature]
 [Signature]
 [Signature]